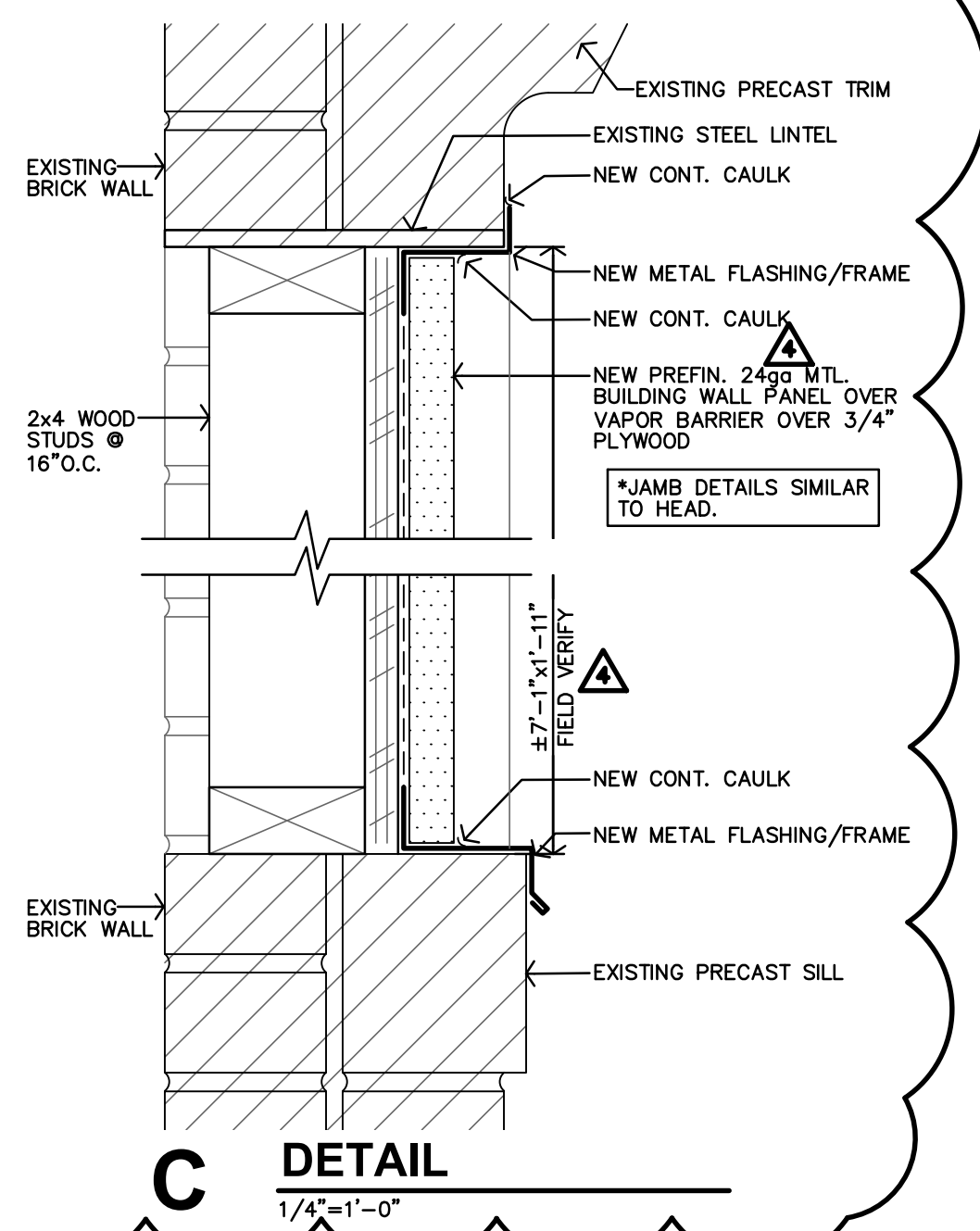


PHOTOGRAPH
NO SCALE



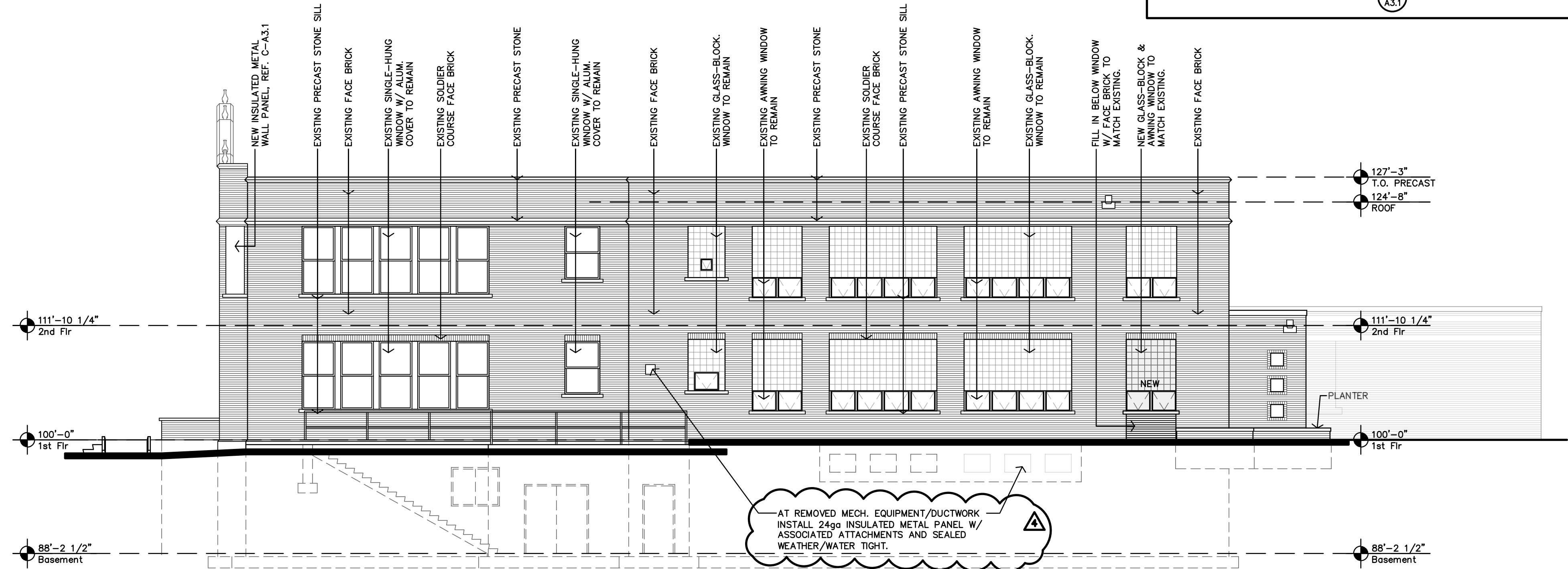
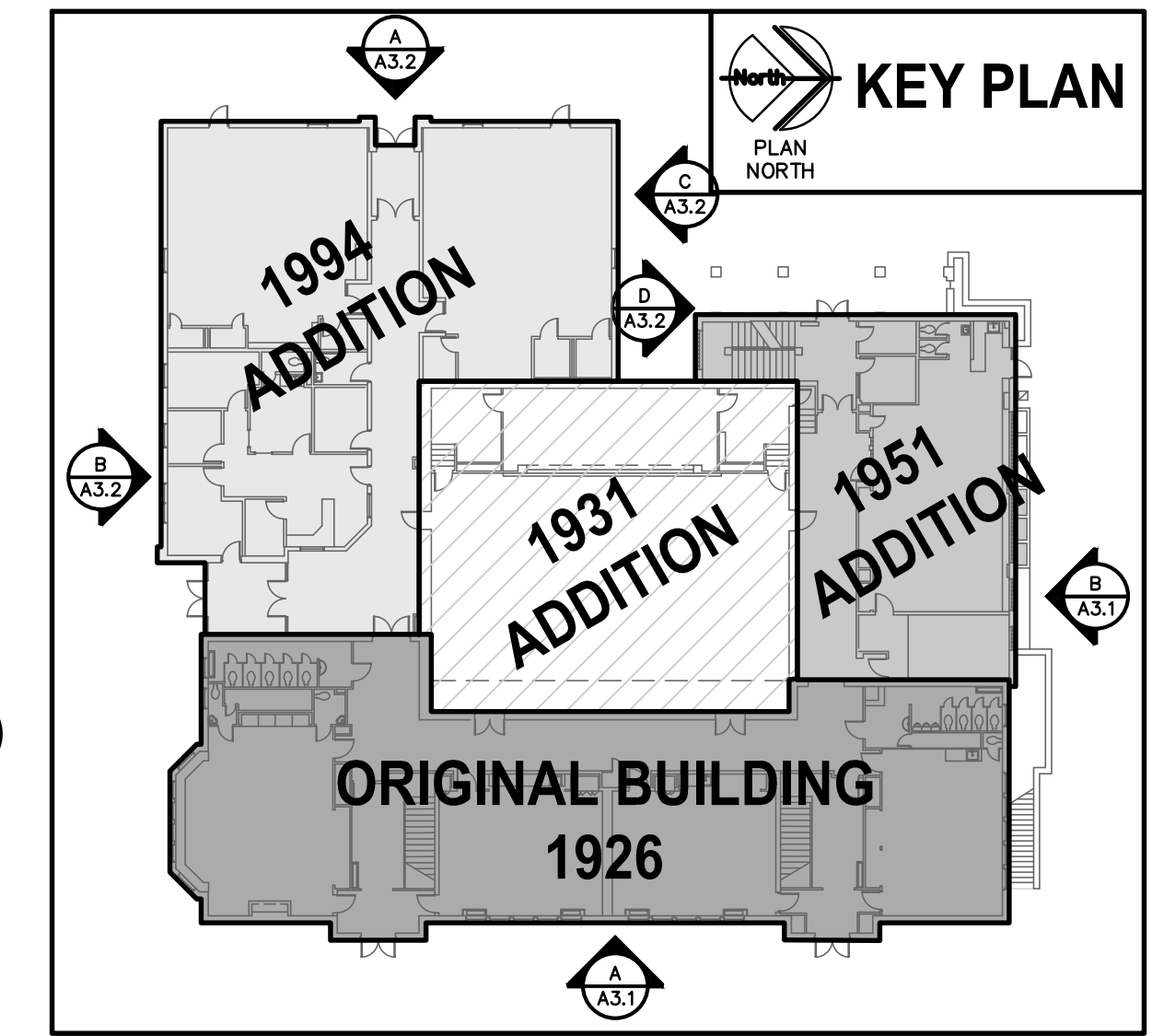
DETAIL
1/4"=1'-0"

GENERAL NOTES

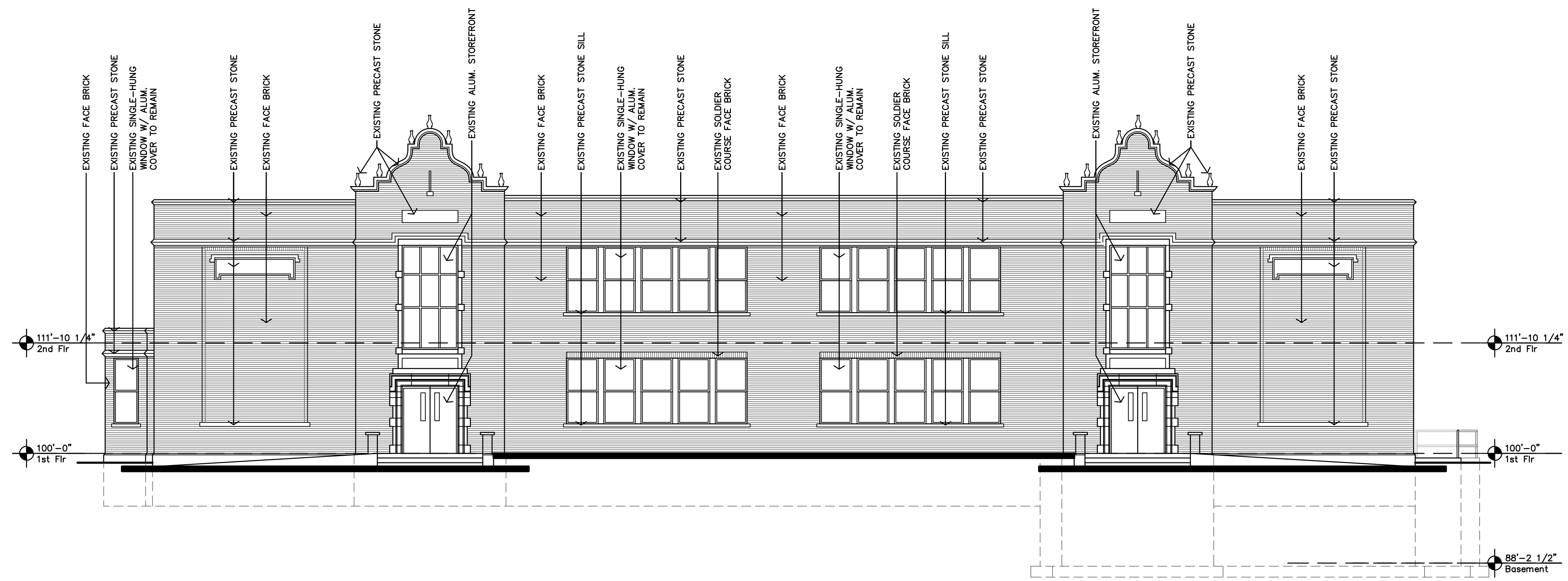
- PARTIAL TUCKPOINTING AT REQUIRED AREAS PER SPECIFICATIONS.
- Tuckpointing, ensure ladder supports and anchors are properly grouted and secure. Replace anchors and supports if required to ensure they are secure and safe for use.
- Contractor to remove and replace all caulking at window and door frames, to be water & weather tight. At glass block openings, and during tuckpointing contractor shall remove all loose grout, tuckpoint all joints to ensure proper water and weather tightness.

GENERAL NOTES

- PARTIAL TUCKPOINTING AT REQUIRED AREAS PER SPECIFICATIONS.
- Tuckpointing, ensure ladder supports and anchors are properly grouted and secure. Replace anchors and supports if required to ensure they are secure and safe for use.
- Contractor to remove and replace all caulking at window and door frames, to be water & weather tight. At glass block openings, and during tuckpointing contractor shall remove all loose grout, tuckpoint all joints to ensure proper water and weather tightness.



B NORTH ELEVATION
1/8"=1'-0"

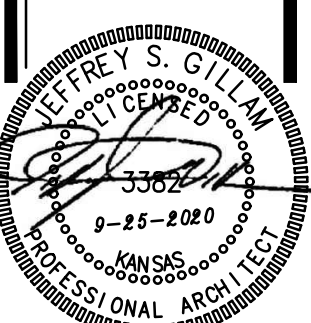


A EAST ELEVATION
1/8"=1'-0"

Architects Planners Designers
1800 Wyandotte St.
Suite 102
Kansas City, MO 64108
jgr@jgarchitects.com



STONEPOST LOFTS
AT WASHINGTON
KANSAS
HAYS,
JONES GILLAM RENZ
785.827.0386
jgr@jgarchitects.com



REVISED:	1-6-2021
	12-1-2020
DATE:	9-25-2020
JOB:	19-3009
SHEET:	

A3.1