

NOTICE TO ALL CONTRACTORS AND SUB-CONTRACTORS – September 29, 2022
Project Name – USD 305 Salina South High Softball Complex, New Restrooms & Concessions
Project # 22-3260

ADDENDUM NO. 3

YOU ARE INSTRUCTED TO READ AND TO NOTE THE FOLLOWING DESCRIBED CHANGES, CORRECTIONS, CLARIFICATIONS, OMISSIONS, DELETIONS, ADDITIONS, APPROVALS, AND STATEMENTS PERTINENT TO THE CONTRACT AND CONSTRUCTION DOCUMENTS. THIS ADDENDUM IS A PART OF THE CONTRACT AND CONSTRUCTION DOCUMENTS AND SHALL GOVERN IN THE PERFORMANCE OF THE WORK.

Bid Date: Tuesday, October 4, 2022 at 2:00 p.m. Bids shall be delivered to the office of Jones Gillam Renz Architects, 730 N. Ninth Street in Salina, Kansas.

Jeff Gillam

Charles Renz

Mark Regier

Maggie Gillam

Chris Gillam

ARCHITECTURAL – Specifications

1. Section 01019 Special Provisions, paragraph 5.f – Contractor shall add the following:
 5. Building Permit Allowance – Include in the base bid an allowance of 8,000.00 for the cost of the Building Permit. This allowance is for the building permit only. The cost for all other permits, fees, connections, etc., shall be included in the Contractor's base bid.

ARCHITECTURAL – Drawings

1. Sheet A4.1 – Delete the reference to the Precast Medallion at the exterior brick wall.
2. Sheet L1 - Add the attached L1 sheet to the construction drawings. This plan reflects seed and sod requirements for the project area.

MECHANICAL – Drawings

1. Sheet M1.2 – Revised sheet attached. Added wall hydrant and general note for domestic water plan.
2. Sheet M6.1 – Revised sheet attached. Revised Plumbing Fixture Schedule.

Receipt of this Addendum shall be noted on the Bid Form.

END OF ADDENDUM NO. 3

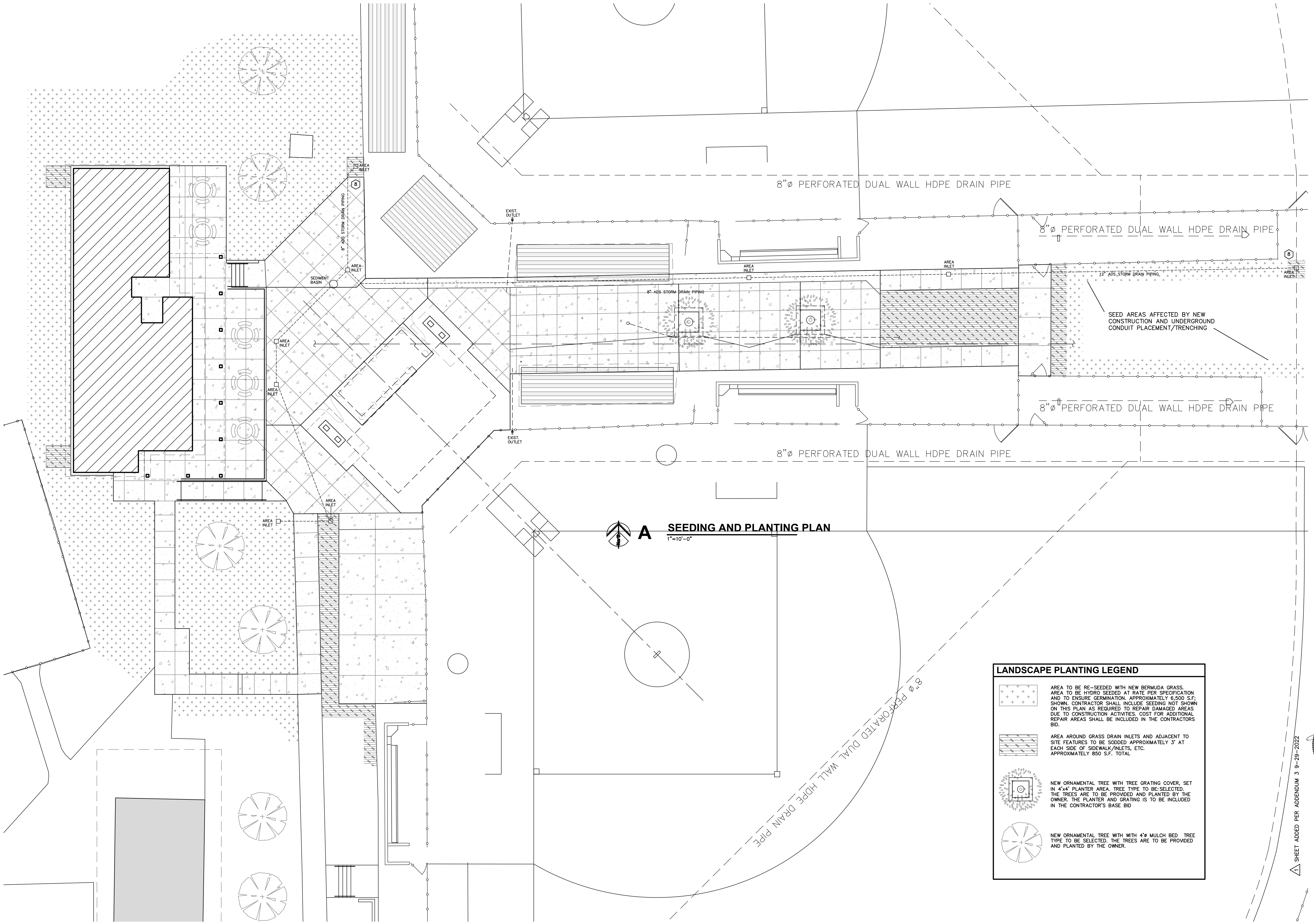
Attachments

- Sheet L1
- Sheet M1.2
- Sheet M6.1



730 N. Ninth (67401)
P.O. Box 2928
Salina, KS 67402-2928
(785) 827-0386

1881 Main St., Suite 301
Kansas City, MO 64108



A SEEDING AND PLANTING PLAN
1"=10'-0"

LANDSCAPE PLANTING LEGEND	
	AREA TO BE RE-SEEDED WITH NEW BERMUDA GRASS. AREA TO BE HYDRO SEEDED AT RATE PER SPECIFICATION AND TO ENSURE GERMINATION. APPROXIMATELY 6,500 S.F. SHOWN. CONTRACTOR SHALL INCLUDE SEEDING NOT SHOWN ON THIS PLAN AS REQUIRED TO REPAIR DAMAGED AREAS DUE TO CONSTRUCTION ACTIVITIES. COST FOR ADDITIONAL REPAIR AREAS SHALL BE INCLUDED IN THE CONTRACTOR'S BID.
	AREA AROUND GRASS DRAIN INLETS AND ADJACENT TO SITE FEATURES TO BE SODDED APPROXIMATELY 3' AT EACH SIDE OF SIDEWALK/INLETS, ETC. APPROXIMATELY 850 S.F. TOTAL.
	NEW ORNAMENTAL TREE WITH TREE GRATING COVER, SET IN 4'x4' PLANTER AREA. TREE TYPE TO BE SELECTED. THE TREES ARE TO BE PROVIDED AND PLANTED BY THE OWNER. THE PLANTER AND GRATING IS TO BE INCLUDED IN THE CONTRACTOR'S BASE BID.
	NEW ORNAMENTAL TREE WITH WITH 4'x MULCH BED. TREE TYPE TO BE SELECTED. THE TREES ARE TO BE PROVIDED AND PLANTED BY THE OWNER.

USD 305 SALINA SOUTH HIGH SOFTBALL FIELDS
NEW RESTROOMS & CONCESSIONS STAND
SALINA, KANSAS

Architects Planners Designers
1861 Mich. Street
Suite 301
Kansas City, MO 64108
jgr@jgrarchitects.com

JONES GILLAM RENZ
785.827.0386

REVISION:
9-29-2022

DATE:
9-12-2022

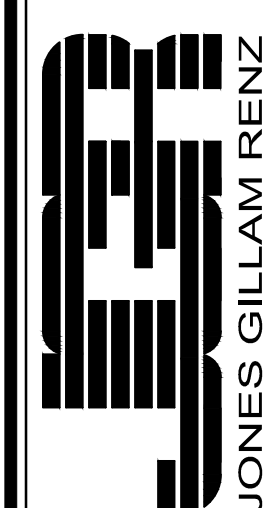
JOB:
22-3260

SHEET:
L1

SHAWN A. REVIE
LICENSED PROFESSIONAL ARCHITECT
5502
9-12-2022
KANSAS PROFESSIONAL ARCHITECT

SHEET ADDED PER ADDENDUM 3 9-29-2022

COPYRIGHTED ©



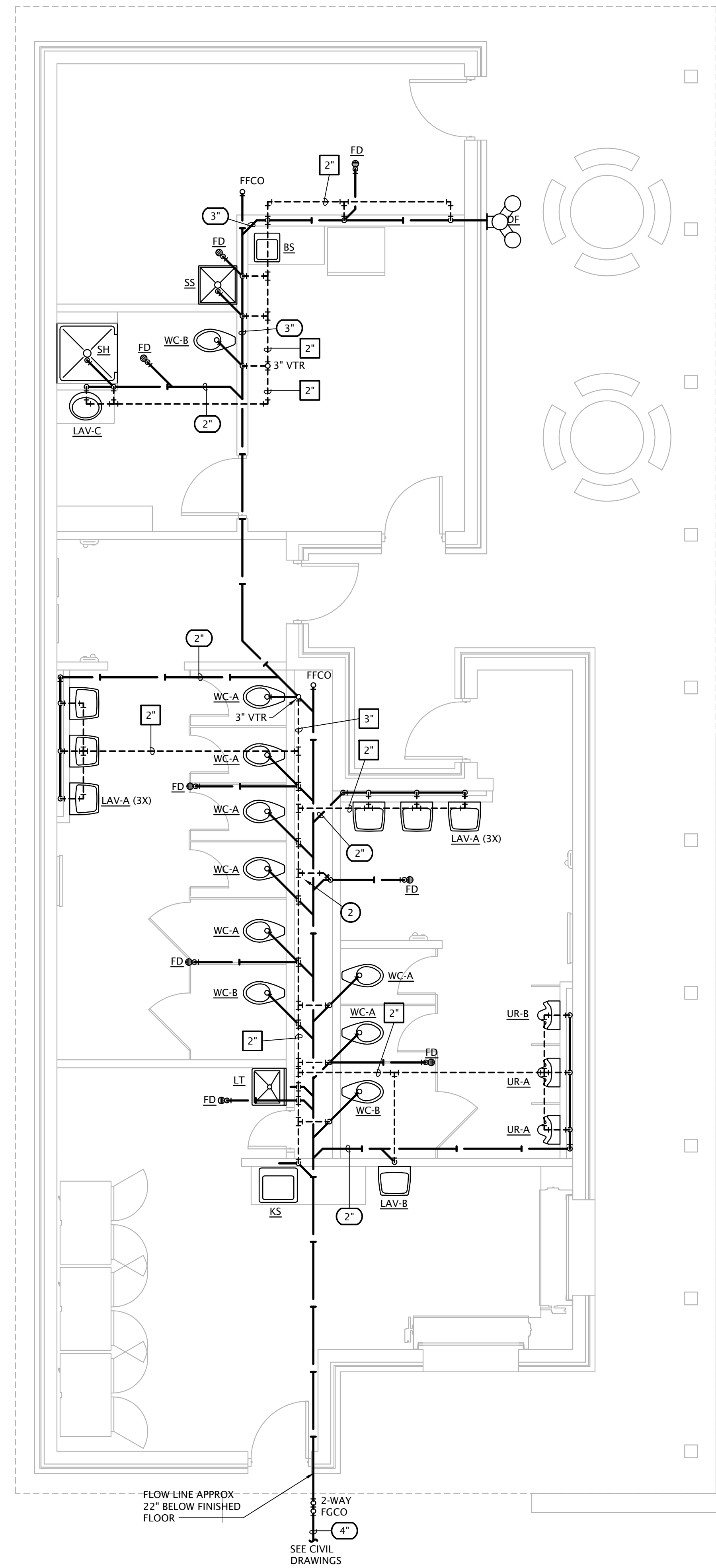
NOTE:
 ALL BALL VALVES SHALL BE VIEGA PROGRESS.

PLUMBING NOTES BY SYMBOL

1. PIPING ROUTED IN CHASE ALONG EXTERIOR WALLS SHALL BE PEX PIPING WITH 1-1/2" INSULATION AND SHALL BE INSTALLED ON BUILDING SIDE OF EXTERIOR WALL INSULATION. PROVIDE 12"x6" STEEL LOUVERED RETURN GRILLE LOW AND HIGH IN WALL FOR AIR MOVEMENT THROUGH CHASE.
2. ROUTE PIPING IN CHASE ALONG WALLS AND HIGH WHERE PIPING IS ROUTED ACROSS CHASE TO MAXIMIZE AVAILABLE SPACE FOR ACCESS TO PIPING IN CHASE.
3. INSTALL HYDRANT AT 18" AFF, TYPICAL.
4. PROVIDE SHUTOFF VALVE IN SERVICE LINE, LOCATE AT 24" AFF
5. ROUTE HOT WATER LOOP DOWN IN WALL TO BEHIND LAVATORIES AND PROVIDE 1/2" BRANCHES TO EACH LAV.

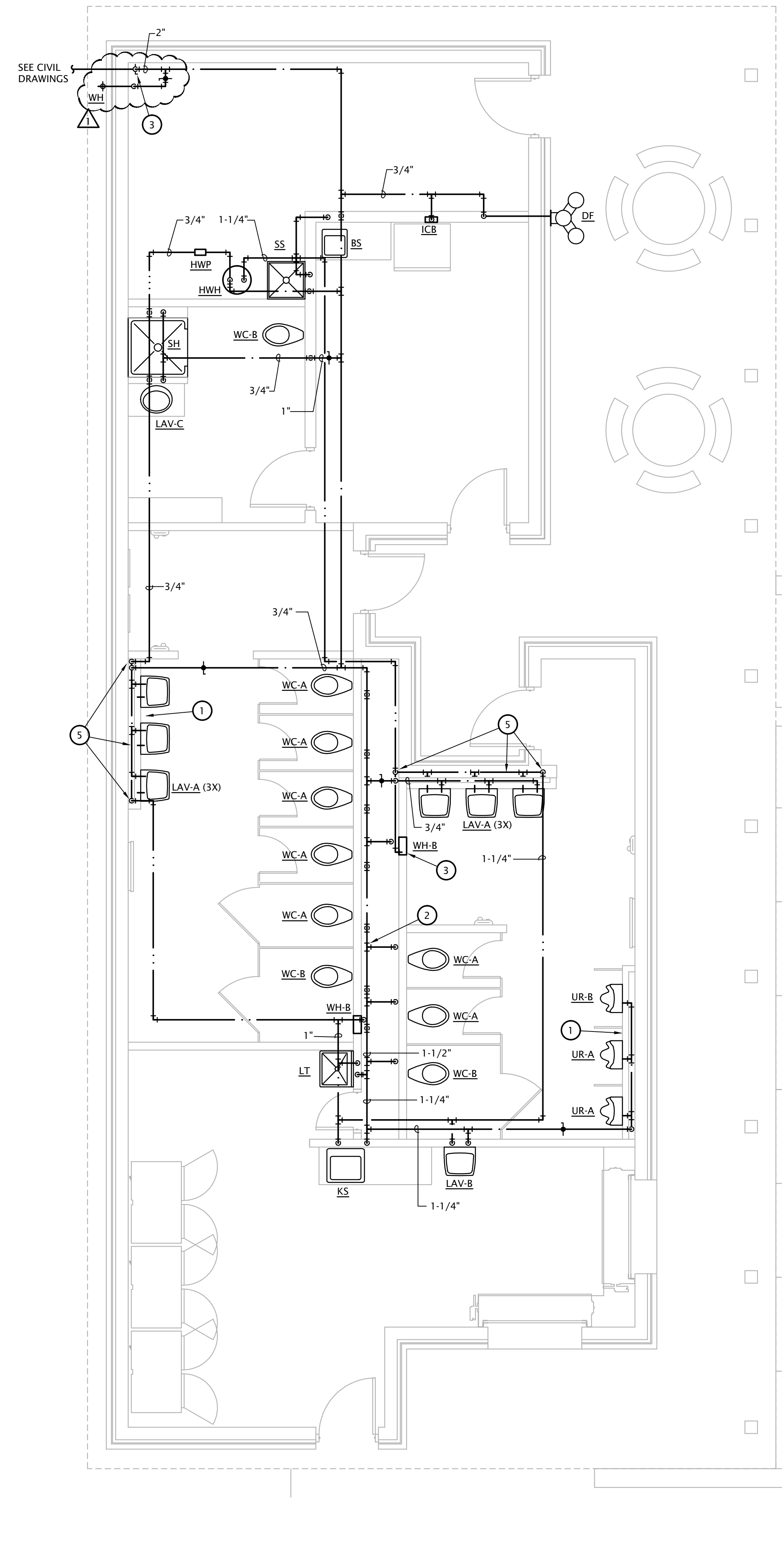
PLUMBING SYMBOLS

- PIPE TURNING UP
- PIPE TURNING DOWN
- SANITARY DRAIN BELOW GRADE
- - - - - SANITARY VENT
- DOMESTIC COLD WATER
- DOMESTIC HOT WATER
- DOMESTIC HOT WATER RECIRC
- WATER SERVICE PIPING
- UNION
- BALL VALVE
- CHECK VALVE



FLOW LINE APPROX
 22" BELOW FINISHED
 FLOOR
 2-WAY
 FGCO
 SEE CIVIL
 DRAWINGS

1 CONCESSIONS STAND DRAIN AND VENT PLAN
 1/4" = 1'-0"



2 CONCESSIONS STAND WATER
 1/4" = 1'-0"



PLUMBING FIXTURE SCHEDULE

MARK	MANUFACTURER	DESCRIPTION	TRIM		ROUGH-IN SIZES				NOTES
			MANUFACTURER	DESCRIPTION	WASTE	VENT	CW	HW	
WC-A	AMERICAN STANDARD	Model 3451.001 floor mounted flush valve water closet, white vitreous china, top spud, 1.28 GPF, elongated 15" high bowl.	SLOAN	Model Sloan 111 manual flush valve, 1.28 GPF. Provide with Model EBV500A retrofit sensor operator.	4"	2"	1"	---	4
WC-B	AMERICAN STANDARD	Model 3043.001 ADA compliant floor mounted flush valve water closet, 12" rough in, white vitreous china, top spud, 1.28 GPF, elongated 16-1/2" high bowl.	SLOAN	Model Sloan 111 manual flush valve, 1.28 GPF. Provide with Model EBV500A retrofit sensor operator.	4"	2"	1"	---	1,4
UR-A	AMERICAN STANDARD	Model 6590.001 urinal, white vitreous china, flush valve wall-hung, 3/4" top spud, elongated flushing rim, washout flushing action, 0.5 GPF. Coordinate mounting height with Architect.	SLOAN	Model Sloan 186 manual flush valve with lever handle, 0.5 GPF. Provide with Model EBV500A retrofit sensor operator.	2"	2"	3/4"	---	4,5
UR-B	AMERICAN STANDARD	Model 6515.001 urinal, white vitreous china, flush valve wall-hung, 3/4" back spud, elongated flushing rim, washout flushing action, 0.5 GPF. Coordinate mounting height with Architect.	SLOAN	Model Sloan 186 manual flush valve with lever handle, 0.5 GPF. Provide with Model EBV500A retrofit sensor operator.	2"	2"	3/4"	---	1,4,5
LAV-A	AMERICAN STANDARD	Model 0356.421 ADA compliant wall hung lavatory, white vitreous china, single hole, with grid drain.	AMERICAN STANDARD	Model 1340.119 single hole deck mount metering faucet with extended spout, vandal proof handle, adjustable run time. Provide grid drain. Provide with Leonard model 170-LF point of use tempering valve.	1-1/2"	1-1/2"	1/2"	1/2"	1,2,3,4,5
LAV-B	AMERICAN STANDARD	Model 0356.421 ADA compliant wall hung lavatory, white vitreous china, single hole, with grid drain.	DELTA	Model 27C4943 two handle faucet, 6" gooseneck spout, 1.5 GPM aerator, lever handles. Provide grid drain. Provide with Leonard model 170-LF point of use tempering valve.	1-1/2"	1-1/2"	1/2"	1/2"	1,2,3,4,5
LAV-C	ELKAY	Model LLVR1916 ADA compliant single bowl self rimming lavatory, 18 ga. type 304 stainless steel, single hole, with grid drain at back of bowl.	AMERICAN STANDARD	Model 1340.119 single hole deck mount metering faucet with extended spout, vandal proof handle, adjustable run time. Provide grid drain. Provide with Leonard model 170-LF point of use tempering valve.	1-1/2"	1-1/2"	1/2"	1/2"	1,2,3,4
SH	AQUATIC	Model 1363BFRF ADA compliant transfer fiberglass shower complete with RH fold up seat, grab bars, pressure balancing mixing valve, hand held shower assembly, soap dish, shower curtain and rod, and removable threshold.	n/a	n/a	2"	1-1/2"	1/2"	1/2"	1,4
BS	ELKAY	Model PSR1517 single bowl self rimming sink, 12" x 12" x 7" bowl, 20 ga. type 304 stainless steel, with LK99 drain body and strainer.	T&S BRASS	Model B1111 deck mounted two handle faucet with 8" swing nozzle, lever handles.	1-1/2"	1-1/2"	1/2"	1/2"	2,4
KS	ELKAY	Model LR2219 stainless steel single bowl self rimming sink, 22" x 19-1/2" x 7-5/8" bowl, 18 ga. type 304 stainless steel with LK99 drain body and strainer.	T&S BRASS	Model B1111 deck mounted two handle faucet with 6" swing nozzle, lever handles.	2"	1-1/2"	1/2"	1/2"	2,4
SS	FIAT	Model MSB-2424 one piece molded stone mop basin, 24" square, stainless steel integral drain body with caulk connection, stainless steel wall guards.	T&S BRASS	Model B-0665-BSTR wall mount faucet with hose thread outlet, vacuum breaker, pail hook, wall brace, metal handles.	3"	1-1/2"	3/4"	3/4"	4
LT	FIAT	Model FL-1 single compartment floor mounted molded composite sink, 20.25"x17.25"x13"D inside with enameled steel angle legs.	T&S BRASS	Model B1110 deck mounted two handle faucet with 6" swing nozzle, lever handles. Provide basket strainer.	2"	1-1/2"	1/2"	1/2"	2,4
DF	MURDOCK	Model CVE24 wall mounted ADA compliant outdoor drinking fountain with bottle filler, 12ga stainless steel heavy duty vandal resistant construction, pushbutton activation, satin stainless finish.	n/a	n/a	2"	1-1/2"	1/2"	---	
HWH	A.O. SMITH	Model DEN-80, 80 gallon electric water heater, (2) non simultaneous 6000 watts, 277 volts heating elements, 27 GPH recovery @ 90°F temp rise. Supplied with temperature & pressure relief valve and brass drain valve.							
HWP	BELL AND GOSSETT	Model NBF-33 circulation pump, bronze body, 10 GPM @ 10' head, 120 VAC. Provide clamp-on aquastat for pump control.							
FD	WADE	1100 series floor drain with 6" satin nickel bronze strainer. Provide trap protection device equal to ProSet Trapguard.			2"	1-1/2"	---	---	
WH-A	WOODFORD	Model B65 automatic draining freezeless wall hydrant with vacuum breaker, loose tee key handle, with recessed box with door. Provide with chrome plated exterior finish.			---	---	3/4"	---	
WH-B	WOODFORD	Model HCB67 automatic draining hot and cold freezeless wall hydrant with vacuum breaker, loose tee key handle, integral check valves, and recessed box with door. Provide with chrome plated exterior finish.			---	---	3/4"	3/4"	

GENERAL:
 · Provide fixtures with all trim necessary for complete installation

NOTES:
 1. Fixture and installation to meet requirements of Americans with Disabilities Act.
 2. Provide BrassCraft SCR19XC or McGuire LFST09LK supply stops, escutcheon plates, and 1-1/4" cast brass p-trap.
 3. Insulate water and waste piping below lavatory. Utilize insulation kit equivalent to IPS LavGuard2.
 4. Trim shall be provided with polished chrome finish.
 5. Provide fixture carrier with feet anchor bolted to slab.

INTAKE LOUVER SCHEDULE

MARK	MANUFACTURER	MODEL	SIZE	FREE AREA (SF)	FINISH	SCREEN	ACTUATOR	SERVICE	DESCRIPTION	NOTES
L-1	GREENHECK	EAC-601	48"H x 36"W x 6"D	5.44	ALUMINUM	BIRD	120V	INTAKE	EXTRUDED ALUMINUM, FIXED BLADE LOUVER WITH MOTORIZED DAMPER	1

NOTES:
 1. Provide flanged frame.

AIR DEVICE SCHEDULE

MARK	MANUFACTURER	MODEL	APPLICATION				FINISH	MOUNTING	DAMPER	DESCRIPTION
			SUPPLY	RETURN	EXHAUST	TRANSFER				
SD	PRICE	520	•				White	Surface Wall/Duct	No	Steel louvered double deflection supply grille, size as indicated on drawings.
RG	PRICE	80		•			White	Surface	No	Steel louvered return grille, size as indicated on drawings.
EG	PRICE	80			•		White	Surface	No	Aluminum louvered exhaust grille, size as indicated on drawings.

GENERAL NOTES:
 • Maximum noise criteria shall be 25.
 • Runouts to diffusers shall be same size as neck, U.N.O.
 • Paint objects visible through grilles with flat black paint.
 • Provide mounting frame as required for ceiling type. Coordinate with Architect.
 • Verify finish with Architect, all devices shall be suitable for field painting.

EXHAUST FAN SCHEDULE

MARK	MFG.	MODEL	TYPE	FAN PERFORMANCE		ELECTRICAL CONNECTION	WEIGHT (LBS)	NOTES
				AIRFLOW (CFM)	E.S.P. (W.C.)			
EF-1	GREENHECK	CUE-095-VG	DIRECT DRIVE CENTRIFUGAL UPBLAST	840	0.50	277/60/1	37	1,2,3
EF-2	GREENHECK	SP-A110	CENTRIFUGAL CEILING CABINET FAN	100	0.25	277/60/1	12	2,3
EF-3	GREENHECK	SP-A110	CENTRIFUGAL CEILING CABINET FAN	120	0.25	277/60/1	12	2,3

NOTES:
 1. Provide roof curb compatible with roof slope and material.
 2. Provide integral disconnect switch.
 3. Provide with integral backdraft damper.

ELECTRIC HEATER SCHEDULE

MARK	MANUF.	MODEL	MOUNTING	WATTS	VOLTAGE/PHASE	DESCRIPTION	NOTES
EH-1	BERKO	CWH1207DSAF	WALL	2,000	277/1	Fan forced wall heater	1,2
EH-2, EH-3	BERKO	EFF4007	CEILING RECESSED	4,000	277/1	Fan forced ceiling heater	1,2

NOTES:
 1. Provide with high temp. thermal cutout and fan delay.
 2. Provide with integral thermostat and unit mounted disconnect switch.

BLOWER COIL SCHEDULE

MARK	MANUF.	MODEL	FAN			HEATING KW (STAGES)	V/Ph	MOTOR FLA	MCA	MOCP
			CFM	ESP	SPEED					
BC-1	TRANE	BCVE024	600	0.5	MED	5(1)	480/3	1.3	9.15	15
BC-2	TRANE	BCVE060	1980	0.7	HIGH	20(2)	480/3	3.3	34.23	35

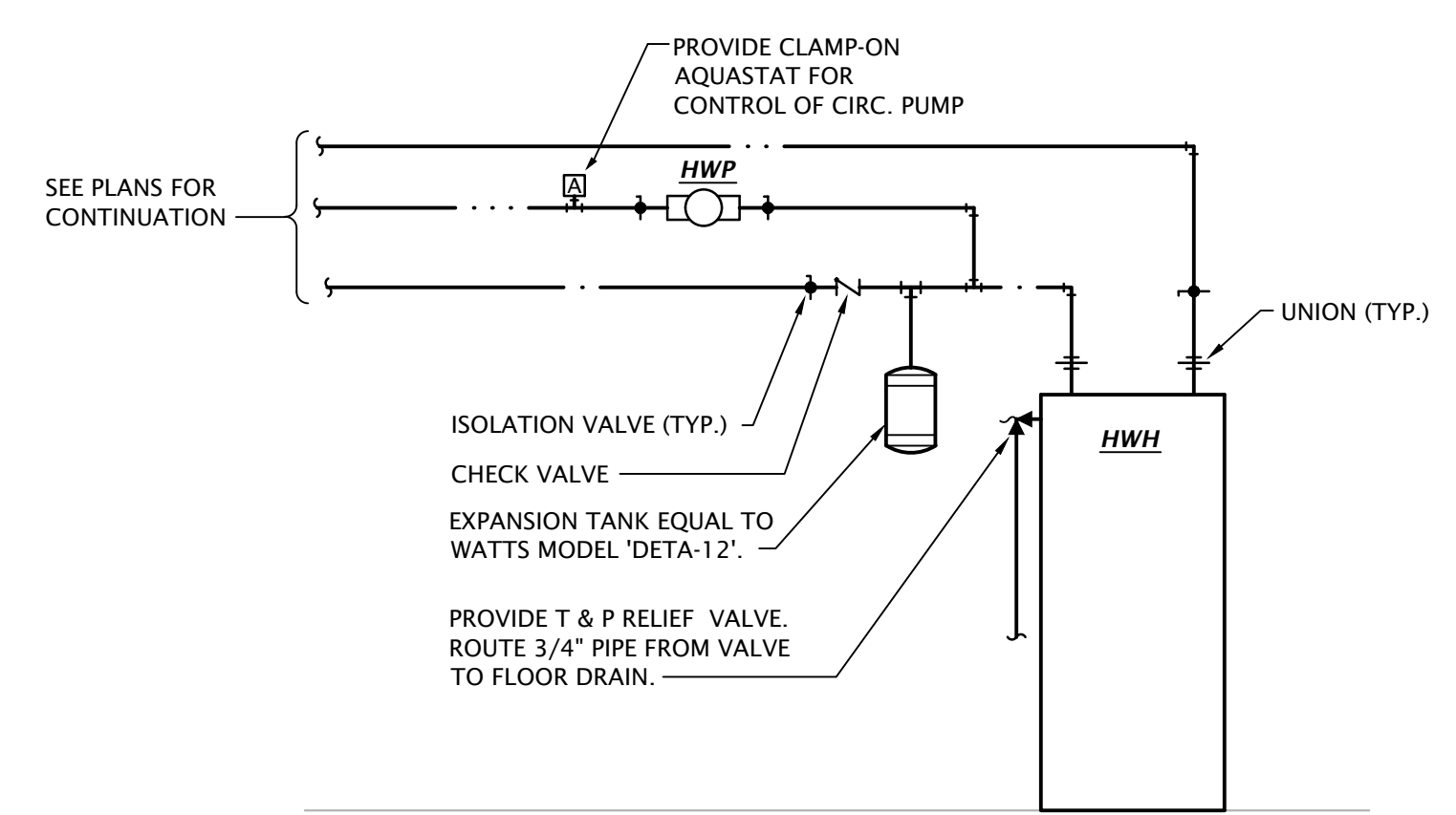
Notes:
 1. Provide 7-day programmable thermostat.

CONDENSING UNIT SCHEDULE

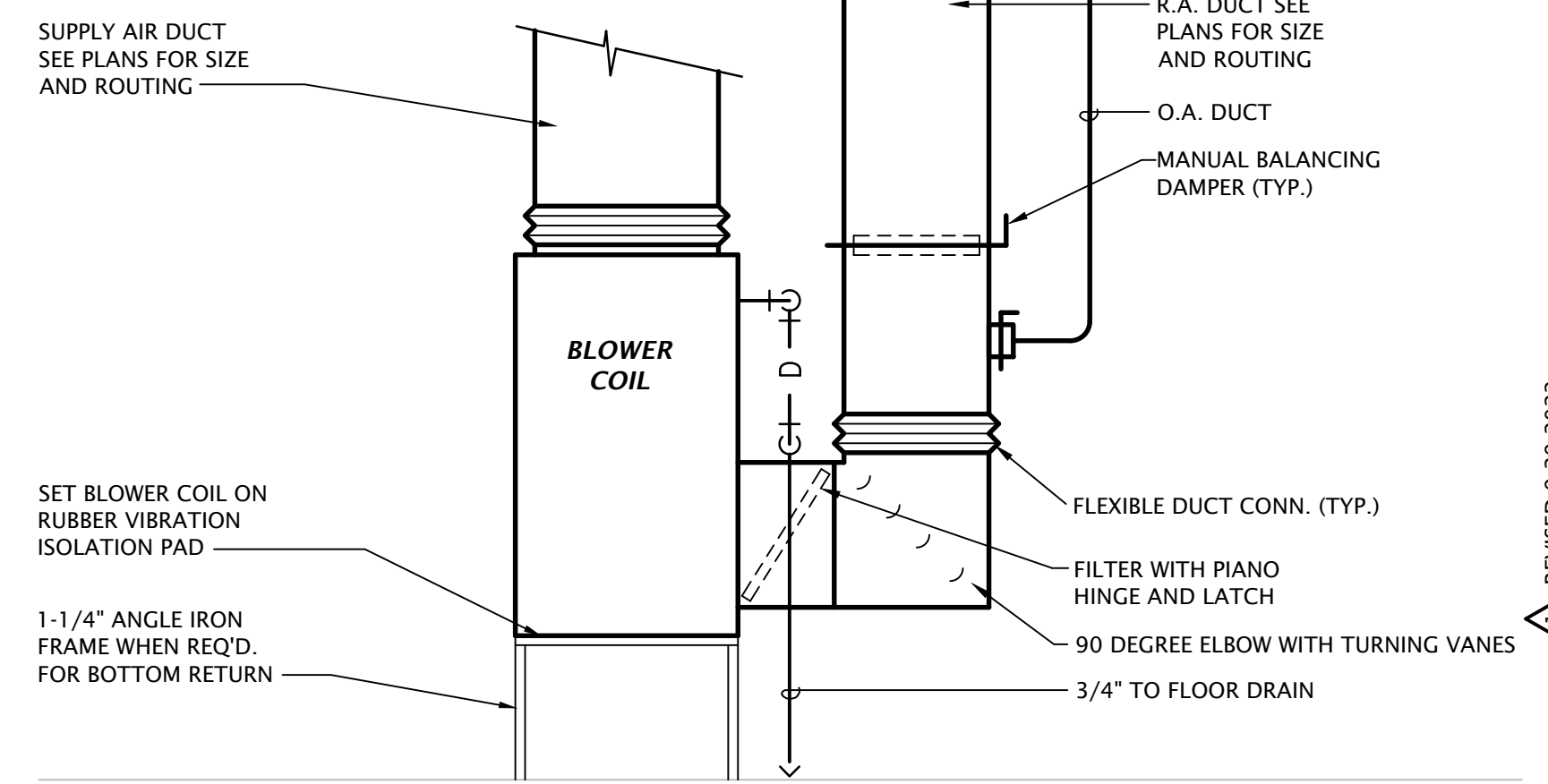
EVAPORATOR		
REFRIGERANT LIQ--GAS	3/8"--3/4"	3/8"--7/8"
ENT. AIR DB	80	87
ENT. AIR WB	67	71
SENSIBLE CAPACITY (MBH)	11.1	34.4
TOTAL CAPACITY (MBH)	15.4	59.9

CONDENSING UNIT		
MARK	CU-1	CU-2 (ALTERNATE BID)
NOMINAL TONNAGE	1.5	5
MANUFACTURER	TRANE	TRANE
REFRIGERANT	410a	410a
MODEL	4TTR4018N1000B	4TTA4060A4000A
O.A. DB	105 F	105 F
REFRIGERANT	R410-A	R410-A
VOLTAGE/PHASE	208/1	480/3
MCA	14	9
MOCP	25/2	15/2
NOTES	1,2	1,2

NOTES:
 1. Provide refrigerant piping sized in accordance with manufacturer's recommendations for actual field installed length and routing.
 2. Provide 24hr/7 day programmable thermostat



2 WATER HEATER PIPING DIAGRAM
 NO SCALE



1 BLOWER COIL DETAIL
 NO SCALE